

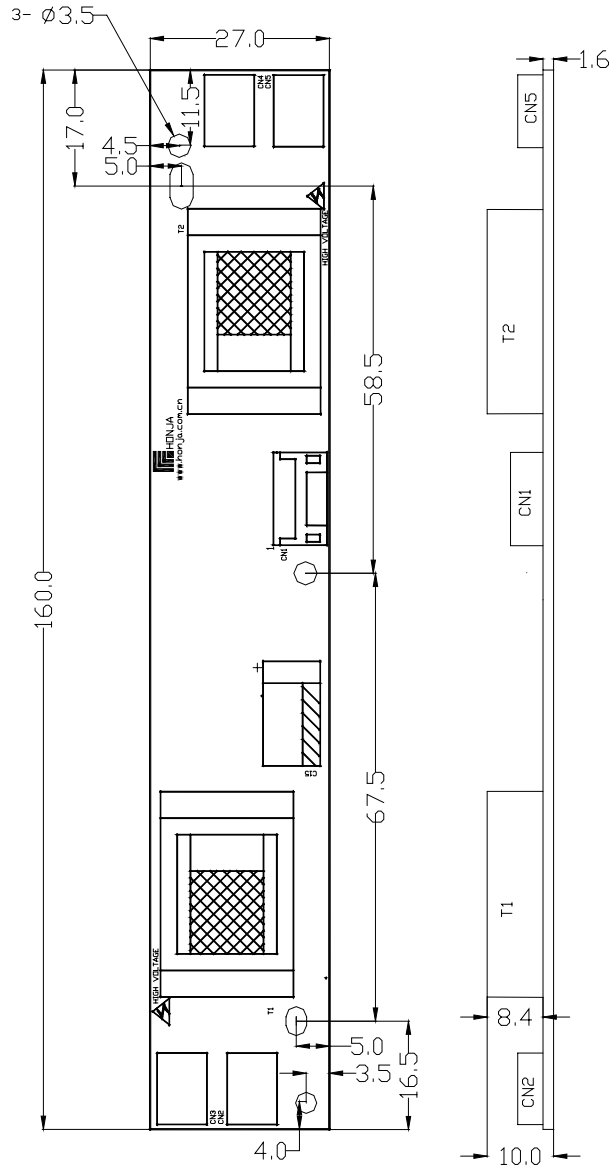


# INVERTER DATA SHEET

HI04AS-6A5-PF

## 1. MECHANICAL DRAWINGS

Unit : mm      Tolerance:  $\pm 0.5\text{mm}$



深圳市宏佳科技有限公司  
**HONJA TECHNOLOGY(SZ)CO.,LTD**  
 地址 :深圳市宝安区福永大洋田开发区福安  
 第二期工业园 15 栋 4 层  
 TEL:0755-29565232    FAX:0755-29565262  
 E-MAIL:sales@honja.com.cn  
[www.honja.com.cn](http://www.honja.com.cn)

制表	设计	审核	批准



# INVERTER DATA SHEET

HI04AS-6A5-PF

## 2. APPLIED DESCRIPTION

This DC-AC Inverter was developed for four CCFL lamps of LCD back lighting system.

## 3. SUITABLE LOAD

Four CCFL lamps Of TFT LCD

## 4. ABSOLUTE MAXIMUM RATING OF ENVIRONMENT

Operating Temperature : 0°C -- 50°C

Storage Temperature: -25°C -- 80°C

Operating Humidity: 10% -- 90%RH

Storage Humidity: 10% -- 90%RH

## 5. INPUT ELECTRICAL CHARACTERISTICS

No.	PARAMETER	Symbol	MIN	TYPE	MAX	Unit	TEST CONDITIONS
1	INPUT VOLTAGE	Vin	10.8	12.0	13.2	V	Vin=12.0V; Von=5.0V Vb=0V;RL=100K
2	INPUT CURRENT	Iin	---	1.60	---	A	
3	INPUT POWER	Pin	---	19.2	26.0	W	
4	BRIGHTNESS VOLTAGE	Vb	0	---	5.0	V	
5	CONTROL VOLTAGE		Enable Von=2.8~5.0V		Disable Voff=0~1.0V		

## 6. OUTPUT ELECTRICAL CHARACTERISTICS

PARAMETER	SYMBOL	TEST CONDITIONS		MIN	TYPE	MAX	UNIT
CURRENT	I <sub>o</sub>	Vin=12.0V Von=5.0V RL=100K	Vb=5.0 V	2.5	3.0	3.5	mA(rms)
CURRENT	I <sub>o</sub>		Vb=0V	6.0	6.5	7.0	mA(rms)
VOLTAGE	V <sub>o</sub>		Vb=0V	---	---	900	V(rms)
IGNITION VOLTAGE	V <sub>ig1</sub>		Vb=0V /25	1400	---	---	V(rms)
VOLTAGE	V <sub>ig2</sub>		VinVb=0V/ 0	1800	---	---	V(rms)
FREQUENCY	f		Vb=0V	43	53	60	kHz
EFFICIENCY	η		Vb=0V	85	---	---	%

深圳市宏佳科技有限公司  
HONJA TECHNOLOGY(SZ)CO.,LTD

地址 :深圳市宝安区福永大洋田开发区福安  
第二期工业园 15 栋 4 层

TEL:0755-29565232 FAX:0755-29565262

E-MAIL:sales@honja.com.cn

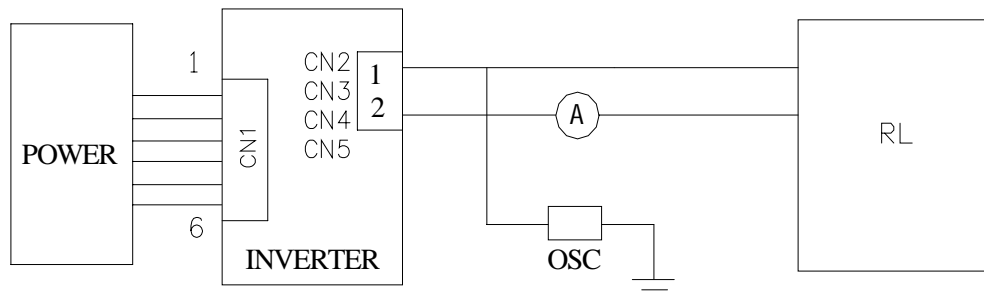
[www.honja.com.cn](http://www.honja.com.cn)

制表	设计	审核	批准

### 7. PIN ASSIGNMENTS

INPUT: CN1(PH-6AW)OR EQUIVALENT				
CONNECTOR	PIN	SYMBOL	DESCRIPTION	VOLTAGE
CN1	1,2	Vin	Supply voltage	10.8---13.2V
	3	Von/off	Standby/operation	On=2.8~5.0V Off=0~1.0V
	4	Vb	Dimming control	0V=Brightness.(Max.); 5.0V=Brightness. (Min.)
	5,6	Gnd	Ground	0 V
OUTPUT: CN2;CN3;CN4;CN5;				
CONNECTOR	PIN	SYMBOL	DESCRIPTION	VOLTAGE
CN2,CN3	1	H-V	High voltage	---
CN4,CN5	2	L-V	Low voltage	---

### 8. Test Circuit Diagram



#### INSTRUMENTS FOR TEST

DC POWER SUPPLY: MCH-305D;  
 AC CURRENT METER: FLUKE 45;  
 FREQUENCY METER: FLUKE 45;  
 H.V.PROBE: HP-9258X100 ONLY;  
 OSCILLOSCOPE: V-5040;

深圳市宏佳科技有限公司  
 HONJA TECHNOLOGY(SZ)CO.,LTD

地址 :深圳市宝安区福永大洋田开发区福安  
 第二期工业园 15 栋 4 层

TEL:0755-29565232 FAX:0755-29565262

E-MAIL:sales@honja.com.cn

[www.honja.com.cn](http://www.honja.com.cn)

制表	设计	审核	批准



# INVERTER DATA SHEET

HI04AS-6A5-PF

## Key Materials Safety Certifications

9. SAFETY PART LISTED :

ITEM	DESCRIPTION	MANUFACTURER	SAFETY NO.
1	PCB	BISHIMAN	E302201
		GOLDORING PRINTED	E256237
		WEIDEXIN	E304272
2	CONNECTOR	UNIVORN-DAKE	E202182
3	CERAMIC INSULATE CAPACITOR	TDK	E37861
4	FUSE	HOLLYLAND-FUSE	E205718
5	TRANSFORMER	JO JINN	E54705
6		FU JU FING	E193774
7		ELECTRICAL	E239508
8		TERALKA	E56086
9		JING YI	E188925
10	PET FILM	GARWARE POLYESTER LTD	E110983

10. SAFETY CLEARANCE

Safety clearance should be more than 2mm / 2KV.

11. .FAULT CONDITION TEST

Damage to the inverter must not occur such as fire, smoke, break, and molten metal in equipment.

12. IMPORTANT

Do not attach a conducting tape to lamp connecting wire, if the lamp wire attach to conductive tape, TFT-LCD module have a low luminance and the inverter has abnormal action because leakage current occurs between lamp wire and conducting tape.

If the display arrangement is less friendly such as the asymmetrical wiring forces unequal losses and the lamps receive imbalanced current. Even with identical lamps, illumination may not be balance.

深圳市宏佳科技有限公司  
HONJA TECHNOLOGY(SZ)CO.,LTD

地址 :深圳市宝安区福永大洋田开发区福安  
第二期工业园 15 栋 4 层

TEL:0755-29565232 FAX:0755-29565262

E-MAIL:sales@honja.com.cn

[www.honja.com.cn](http://www.honja.com.cn)

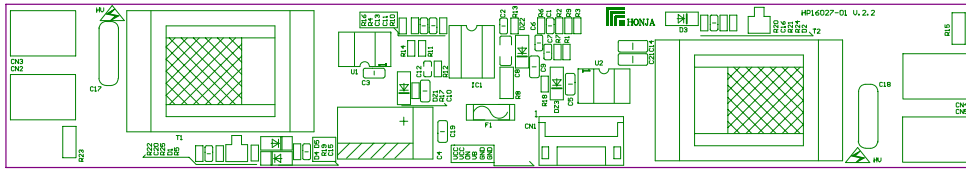
制表	设计	审核	批准



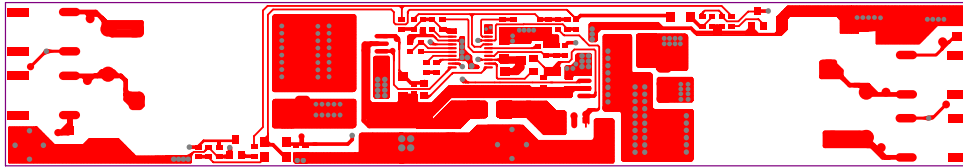
# INVERTER DATA SHEET

HI04AS-6A5-PF

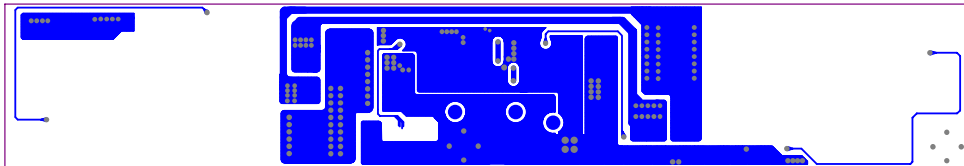
## HI04AS-6A5-PF PCBLAYOUT



Top Overlay



Top Layer



Bottom Layer

深圳市宏佳科技有限公司  
HONJA TECHNOLOGY(SZ)CO.,LTD  
地址 :深圳市宝安区福永大洋田开发区福安  
第二期工业园 15 栋 4 层  
TEL:0755-29565232 FAX:0755-29565262  
E-MAIL:sales@honja.com.cn  
[www.honja.com.cn](http://www.honja.com.cn)

制表	设计	审核	批准