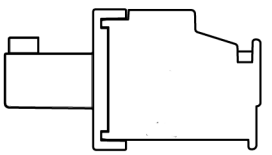
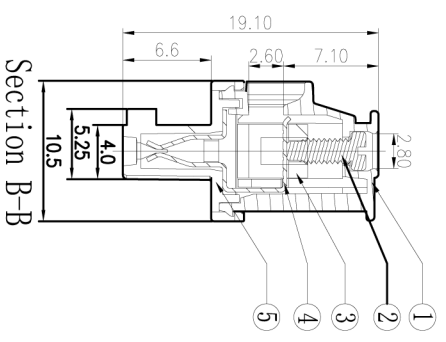
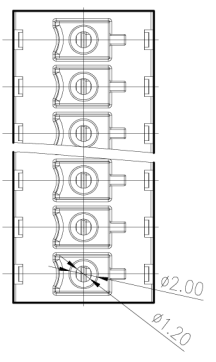
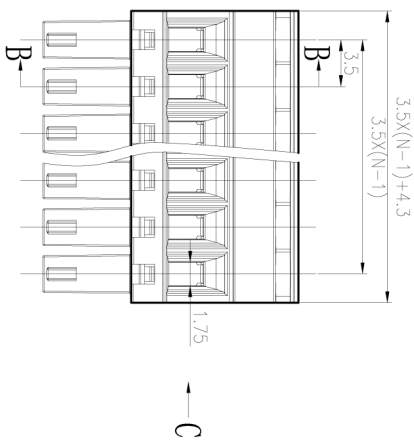
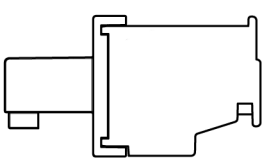
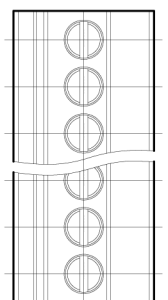


REVISION RECORD			
REV	ECO	DESCRIPTION	DATE

Notes:

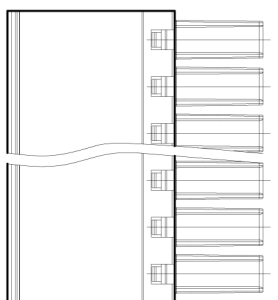
- 1. Pitch: 3.5mm, Poles: 2-24P
- 2. Rated voltage/current: UL 300V/8A  
VDE 250V/7A
- 3. Operation temperatures: -40°C ~ +105°C
- 4. Withstanding Voltage: AC2000V/1Min
- 5. Insulation Resistance: 5000M $\Omega$ /DC1000V
- 6. Wire Range: 28~16AWG, 0.5~1.5mm<sup>2</sup>
- 7. Max. Torque Value: M2, 2.04kgf.cm (1.77lb.in)
- 8. Undimensioned Tolerances:

Pitch range	In mm	Nominal dimension	range
6 to 10	±0.25	±0.3	±0.5
10 to 24	±0.25	±0.3	±0.7
30 to 60	±0.25	±0.3	±0.7
60 to 100	±0.25	±0.3	±0.7
100 to 150	±0.25	±0.3	±0.7
150 to 200	±0.25	±0.3	±0.7



Section B-B

Section C-C



ITEM	NAME OF PART	NO. OF PART	Q'TY	MATERIAL	NOTES
1	15EDGKA/B-3.5-100A-Housing	1033A0YXXE(H)	1	PA66	UL94V-0
2	15EDG Screw-M2.0	S000001360(H)	XX	Steel	C <sup>3+</sup> Zn
3	15EDGK Cage	X000000010(H)	XX	Brass	Ni Plated
4	15EDGKA/B-100A-C1amp	1033B00020(H)	XX	Phosphor bronze	SnCe
5	15EDGKA/B-3.5-100A-Cover	1033C0YXXE(H)	1	PA66	UL94V-0

DETACHED LISTS	
MM	±
.0	±
.000	±
ANGLES	± 1°
THIRD ANGLE PROJECTION	
G.E.:	
FINISH:	
SCALE:	1:1
NAME	15EDGKA-3.5-XXP-1Y-100A(H)
DRAWING NO.	15EDGKA-3.5-E100
PART NO.	
DO NOT SCALE DRAWING	