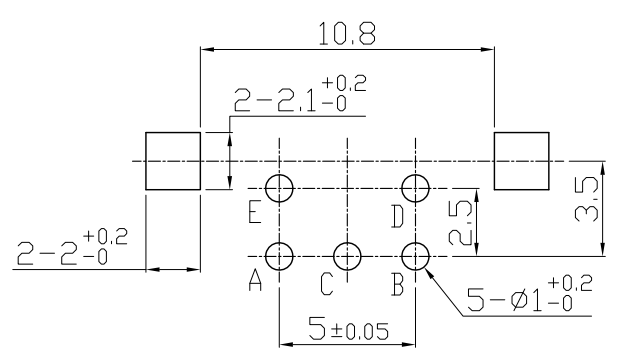
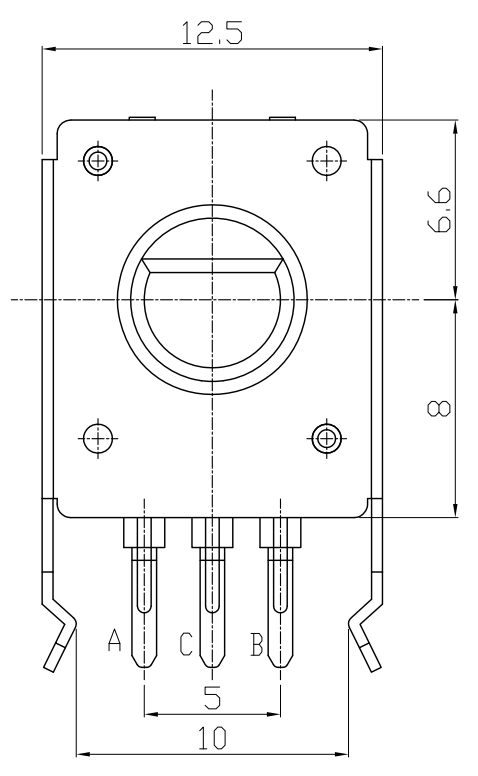
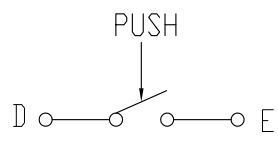
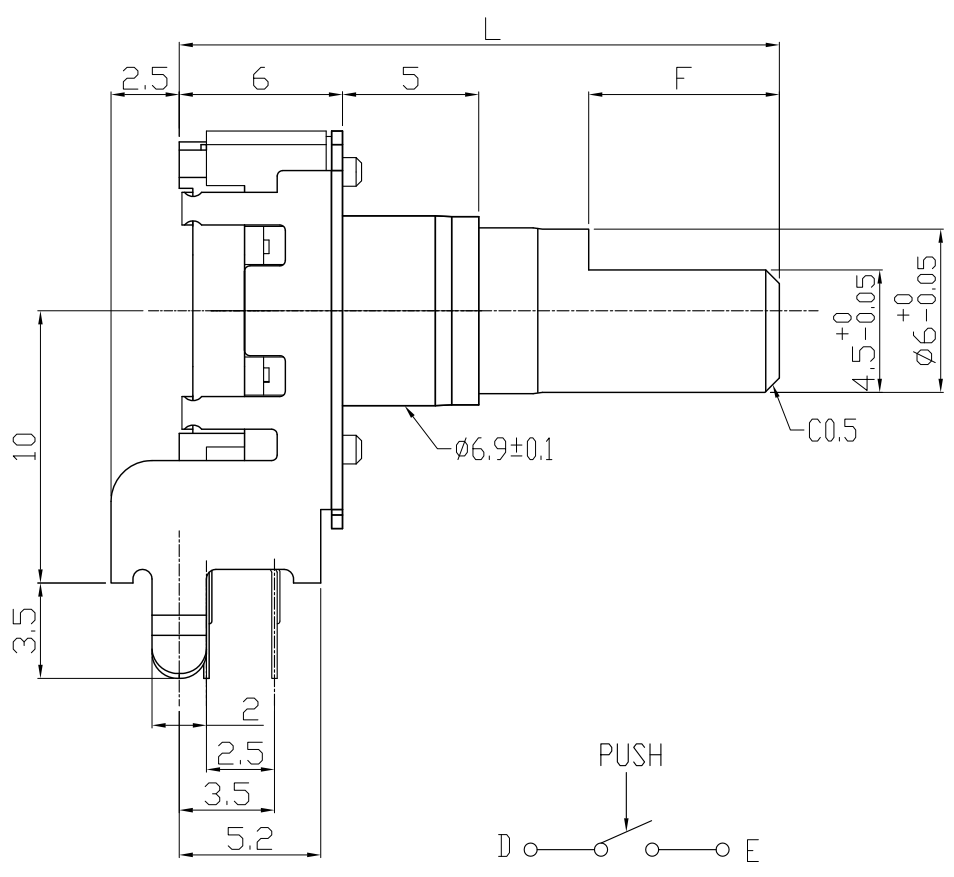


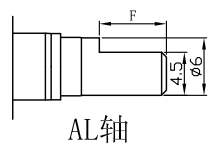
MODEL RE1201XH1-V02

BASIC DIMENSIONS	L ≤ 10	10 < L	100 ≤ L	ANGLE	UNIT
TOL.	±0.3	±0.5	±0.8	±5°	mm



P.C.B.MOUNTING DETAIL

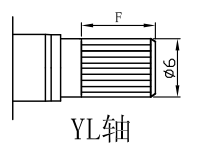
轴型规格



AL轴

无轴套

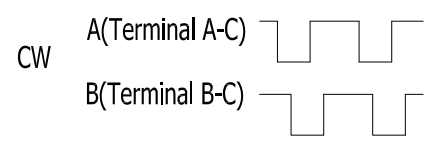
L	17.5	20	22.5	25	30
F	5	7	7	12	10



YL轴

无轴套

L	15	17.5	20	22.5	25	30
F	2.5	5	7	7	12	12



OUTPUT PHASE